

CHARITY PROJECTS • WORKSHOPS • GIGS • FILMS • EXHIBITIONS



THE HIVE

JANUARY - APRIL 2024

HIVEONLINE.ORG.UK

WELCOME TO THE HIVE

Welcome to The Hive's Spring 2024 brochure. Our new format means that all event and activity listings have been streamlined for your ease to help you quickly locate events that might be of interest, happy browsing!

Vicki Duckett-Snape
Marketing & Communications Manager

► **WELLBEING PROJECTS p3**

► **WELLBEING WORKSHOPS p5**

► **HIGHFLYERS WORKSHOPS p5**

► **WEEKLY EVENTS p6**

► **ART GALLERY EXHIBITIONS p7**

► **SHREWSBURY FILM p8**

► **FOLK AT THE HIVE p10**

► **SHREWSBURY JAZZ p10**



THE HIVE



Our cover is an original piece of artwork created by a young person who took part in our Exploring Creativity project which ended in December 2023. It also features in our current Wellbeing Projects Exhibition.

WELLBEING PROJECTS

We run charity wellbeing projects across Shropshire, Telford & Wrekin. Over the past 18 years our charity work has reached over 45,000 people across the region. Here is a breakdown of our current projects. If you would like to know more about any of these projects, please email projects@hiveonline.org.uk

Scan this code to learn more via our website



AMPLIFY

Funded by Arts Council National Lottery Project Grants, this exciting new project will work with local young people to nurture talent and provide opportunities within the music industry, providing support from freelancers to develop skills and confidence. Suitable for those who have broad ambitions and interests including; sound engineering; producing, marketing, and performing. No previous experience needed.

FLAX COLLECTIVE

In partnership with Shrewsbury Flaxmill Maltings, this is a monthly Saturday group for 18-25-year-olds who are keen to tell The Flaxmill how to make their venue better for young people. Looking for fresh, bold and brave ideas, your help is needed to get more young visitors through their doors! Design events and get creative with support from friendly staff and volunteers!



CULTURAL INVESTIGATORS

Funded by Arts Council National Lottery Project Grants, we are exploring the inspiration that The Hive has provided over the years and are using this to engage young people to realise their own cultural futures. Through an exciting range of workshops to upskill our young curators group, they have designed a celebration exhibition, opening this April. They have been researching the history of The Hive as well as helping create exciting content for the exhibition itself through printmaking, collage, textiles, music and podcasting!

WELLBEING PROJECTS

We run charity wellbeing projects across Shropshire, Telford & Wrekin. Over the past 18 years our charity work has reached over 45,000 people across the region. Here is a breakdown of our current projects. If you would like to know more about any of these projects, please email projects@hiveonline.org.uk

Scan this code to learn more via our website



MYCOLLEGE

Funded by The National Lottery Community Fund - Reaching Communities; Wynn Foundation; Tesco Bags of Help; and The Community Foundation for Staffordshire. This project works creatively to boost confidence, encourage connection, and support those experiencing transitory challenges in life, helping 16 - 30 year olds living locally gain independence and self belief. Participants aim to learn new skills, make connections with others, explore ideas, build confidence and have fun. Led by a team of professional artists.

PARACHUTES

Creative sessions which enable parents, carers and children aged 5 and under to build joint experiences and memories and support children's creativity, sensory and essential social skills. Sessions take place twice a month during term-time at Riversway Elim Church in North Shrewsbury and include pottery, storytelling, music, nature workshops and messy play. Sessions run during term time and are for families from Harlescott and surrounding areas.



OUT OF THE GROOVE

Funded by Youth Music, in partnership with The Grange Gang.

Introducing music to a youth group in a positive and engaging way, as a progressive, enjoyable, and beneficial activity. For young adults aged 11- 25 with additional needs. For this particular project, please contact julieb.grangegang@outlook.com.

WELLBEING WORKSHOPS

FREE



VERBATIM THEATRE

24th Feb 10am - 4.30pm

Join freelance Theatre-maker Vicki Duckett for a one day Verbatim Theatre Project. Learn about performance techniques when using real life stories and interviews about The Hive as inspiration. These words have never been staged before and the theatrical journey starts with you.

MOSAIC WORKSHOP

17th Feb 10am - 4pm

Join Jackie Coyle as she invites you to help create the story of The Hive in mosaic!

More workshops are due in March, make sure you are signed up to The Hive's newsletter to stay up-to-date.

Scan here to sign up today.



FREE REHEARSAL SPACE IN OUR MUSIC STUDIO FOR 13-25 YEAR OLDS

Our exciting new **Amplify project** allows us to offer **free** use of our music studio for young bands and solo performers. Get in touch with us to find out more!

HIGHFLYERS SPRING WORKSHOPS 2024

Shropshire inclusive Dance expert youth team and support staff will guide young people aged 11-17 years with SEND on an exciting dance journey.

21st Jan - The Hive 2-4pm

4th Feb - The Hive 10:30am-2:30pm

16th Feb - Elite Dance Studio 2-4pm

18th Feb - Elite Dance Studio 2-4pm

3rd March - The Hive 2-4pm

27th March - The Hive 10:30am-2:30pm

3rd April - The Hive 10:30am-2:30pm

7th April - The Hive 2-4pm

Join Highflyers Youth Dance Company to move, dance, play, explore and express your creativity. Places are limited so we advise booking early to secure a place and avoid disappointment. Young people of all abilities are welcome. Sessions run fortnightly on a Sunday and during school holidays at The Hive and Roam Dance School. **For further information contact Rachel Liggitt on youthsidance@gmail.com**



WEEKLY EVENTS

Weekly events take place at The Hive throughout the year, including music activities for little people, theatre for young people and art classes for adults.

YOUTH CAFE | Tuesdays during term time / 4pm - 6pm / Ages 11-16

Young Shrewsbury's Hive Youth Cafe provides a safe place where young people can meet, and share in creative activities including music, drama & films. Youth workers are present to share up-to-date information, advice, and guidance.



LIFE DRAWING

Tuesdays during term time, 7pm - 9pm
£9 per session

All levels welcome to drop in on these informal sessions. Different model weekly and occasional special events. Please note: this is not a tutored class. Please bring your own materials.

Contact: louisediggle@gmail.com /
c.evanstuba@gmail.com



THE MERE SINGERS

Mondays during term time, 7.30pm-9.00pm.

This is an open-access mixed voice, adult choir singing original and traditional acapella songs that are uplifting and engaging, directed by Mary Keith. No need to read music. Reduced rate termly fees, or PAYG. Free trial available.

Contact Mary for details: maryskeith@aol.com

SHROPSHIRE YOUTH THEATRE

Shropshire's only youth theatre group focusing on classic drama and literary adaptations. Opportunities for students to work in acting, costume, music, stage management, design and marketing. Email: sytlisamorris@gmail.com or visit www.shropshireyouththeatre.co.uk

Saturdays in term time

9.30am - 10.45am Beginners 6 - 8 yrs

11am - 1pm Juniors 9 - 12 yrs

Thursdays in term time

7pm - 9.30pm Seniors 13 - 25 yrs

BUZZY BEATS

Fridays, during term time
10.30am - 11.30am

£7 Child / £6 Sibling / 6 months to 5 years



Set your children off on a creative, music filled journey in this great weekly workshop. Bang, crash and chime together to create beautiful music. Fun for little ones and grown-ups too! Group sizes of limited numbers. Booking essential.



ART GALLERY

The Gallery is open Tuesday – Friday during term time from 10am - 4pm. This versatile space allows us to showcase creative work by local and national artists and makers. Our venue also offers refreshments and a range of snacks for you to enjoy as you take in our programme of exhibitions. Exhibition launch nights are FREE to attend with no booking necessary.

FREE



WELLBEING PROJECTS SHOWCASE EXHIBITION 2023

13th December 2023 - 13th February 2024

A group exhibition showcasing a wonderfully diverse collection of visual artwork created by participants engaging in The Hive's Wellbeing Projects. Drawings, paintings, ceramics, digital art, animation, music, video and poetry demonstrate how we use inspiring, inclusive and creative experiences to transform lives.

SHREWSBURY STREETSCAPE PROJECT: THE FIRST FIVE YEARS

16th February - 12th March 2024

Darwin Shrewsbury Festival Special Exhibition:
Exhibition by James St. Clair Wade.

In April 2019 local artist and architect, James St. Clair Wade began work on an ambitious survey of the historic streetscape of Shrewsbury in a series of unique architectural views allowing the whole length of each street to be seen simultaneously. This exhibition highlights the richness and variety of the town's architecture.



All welcome to the launch night on Friday

16th February @ 6.30pm.



THE HIVE LEGACY: CONNECTING COMMUNITY CREATIVELY

23rd April - 18th June 2024.

This is the celebration exhibition for our Cultural Investigators Project. Our Young Curators group have chosen the name for the exhibition to reflect their own feelings about The Hive.

A unique exhibition exploring a range of art forms, designed by The Hive's Young Curators. It features people from the past, present and future who have, are and will benefit from being part of the youth space we now call The Hive.

All welcome to the launch night on Saturday 20th April @ 3-7pm.



Compartment No. 6

COMPARTMENT NO. 6

(2022), Finland

Friday 12th January, 8pm

A Finnish archaeology student travels to the Arctic Circle. En route by train, an offbeat, romantic story develops as she shares her carriage with a fellow passenger who is her complete opposite.

Subtitled, 103 mins, Cert 15

THE QUIET GIRL

(2022), Ireland

Friday 26th January, 8pm

Cait, a neglected young girl, is sent to live with her countryside relations for the summer. As their affectionate home becomes an idyll for her, she starts to discover their secrets and learn the importance of family in rural Ireland.

94 mins, Cert 12



The Quiet Girl

CHUNGKING EXPRESS

(1994), Hong Kong

Wednesday 31st January, 8pm

Wong Kar Wei's international breakthrough, this beautiful drama tells of two melancholy Hong Kong policemen falling in love, one with a mysterious female underworld figure, the other with an ethereal waitress at a late-night restaurant where he is a regular customer. They cross paths and their lives develop in unexpected ways.

Subtitled, 100 minutes, Cert 15

BERGMAN ISLAND

(2022), France/Sweden

Friday 9th February, 8pm

Two filmmakers visit the Swedish island of Fårö, long-time home of the fabled director Ingmar Bergman, seeking inspiration for their latest projects. As the summer passes, the lines between reality and fiction become blurred.

Subtitled, 109 mins, Cert 15

EO

(2022), Poland

Friday 23rd February, 8pm

EO, a grey donkey, escapes from a circus and then treks across Poland and Italy. Meeting a wide range of characters, including a priest, a countess and a football team, he reveals society's highs and lows.

Subtitled, 88 mins, Cert 15

TROPICAL MALADY

(2004), Thailand

Wednesday 28th February, 8pm

Thai director Apichatpong Weerasethakul established himself with international audiences by this fascinating two-part story, half relatively conventional narrative, half in a mysterious deamscape, which in combination produce remarkable, lingering emotions. The film won the Jury Prize at the Cannes Film Festival.

Subtitled, 114 minutes, Cert 12

AZOR

(2021), Argentina
Friday 8th March, 8pm

In the alluring world of the ultrawealthy of 1980s Argentina, a private banker mysteriously disappears. Uncovering his trail reveals more than financial wrongdoing.
Subtitled, 100 mins, Cert 12

METROPOLIS

(1927), Germany
Wednesday 13th March, 8pm

In Metropolis, director Fritz Lang created the first great science fiction film, with his vision of a futuristic city combining scientific progress and human despair. Using 25,000 extras and astonishing special effects, he created the images that continue to shape visions of the future. We are showing the fully restored version of the film with breathtakingly sharp images and a striking musical soundtrack.
Interitles, 150 minutes, Cert PG, with interval

PEOPLE OF THE MOUNTAINS

(1942), Hungary
Friday 22nd March, 8pm

Set in the beautiful woodlands of Transylvania, this moving story tells of the impact of industrialisation on family and community life. One of the greatest Hungarian films of all time!
Subtitled, 88 mins, Cert 15

ALCARRAS

(2022), Spain
Friday 5th April, 8pm

Winner of the "Best Film" award at the Berlin Film Festival, this is an impressive ensemble drama about change in the spectacular Spanish countryside, and its winners and losers.
Subtitled, 120 mins, Cert 15



Alcarras



A Matter of Life and Death

A MATTER OF LIFE AND DEATH

(1946), UK
Wednesday 10th April, 8pm

From the acclaimed directorial pairing of Michael Powell and Emeric Pressburger comes a remarkable fantasy in which World War II airman David Niven finds himself summoned to heaven after surviving a plane crash that should have killed him.
104 minutes, Cert U

TORI AND LOKITA

(2022), Belgium
Friday 19th April, 8pm

The Dardenne brothers, directors of "Two Days, One Night" and "The Promise", are back with another blistering slice of social realism set in their home town, this time focused on forced migration and the trade in illegal drugs.
Subtitled, 88 mins, Cert 15



Tori and Lokita

FOLK AT THE HIVE

Gigs by some of the best folk artists currently on the scene from the UK and further afield. Doors open at 7pm. Gigs begin at 7.45pm. For booking information, see bottom of page.



RICHARD SHINDELL

Sunday 24th March. Tickets from £16

Shindell is a writer whose songs paint pictures, tell stories, juxtapose ideas and images, inhabit characters, vividly evoking entire worlds along the way and expanding our sense of just what it is a song may be.



JOSHUA BURNELL AND ANNIE DRESSNER

Sunday 28th April. Tickets from £15

Joshua Burnell makes retro pop-rock for the modern world. Annie's musical journey was inspired by icons like Simon & Garfunkel, Carly Simon, and Ben Kweller, she began crafting her own melodies, often humming her thoughts like a secret soundtrack to city life. Her music serves as a reminder that even in life's chaos, there's beauty to be found in its soundtrack.

SHREWSBURY JAZZ

Doors open at 7.30pm for an 8pm start. For up-to-date gig listing please refer to The Hive's website hiveonline.org.uk For booking information, see bottom of page.



JONNY MANSFIELD QUARTET

Saturday 13th January. Tickets from £12

Multi-award winning Vibraphonist Jonny Mansfield returns to the Hive with his exceptional quartet comprising Will Barry (piano), Will Sach (bass) & Luke McCarthy (drums). A performance of original compositions using sensitive improvisation and folk-like melodies to create a kaleidoscope of colours. Contemporary Chamber Jazz at its best.



RORY INGHAM

Saturday 17th February. Tickets from £12

Trombonist Rory Ingham leads a sextet of leading musicians in a performance of the intensely engaging music of Wayne Shorter, legendary US saxophonist and composer who sadly passed away in 2023. Nadim Teimoori (tenor) & Jim Davison (trumpet) complete the fiery front line which is complemented by the irrepressible rhythmic powerhouse of Deschanel Gordon (keyboard) Joe Lee (double bass) and Will Cleasby (drums).



GAZ HUGHES QUARTET

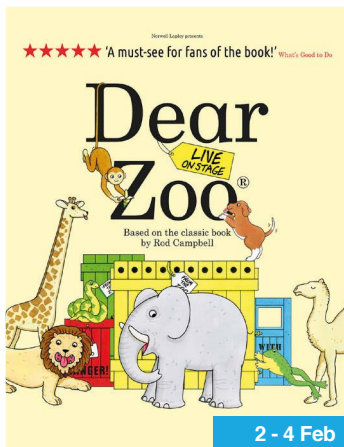
Saturday 9th March Tickets from £12

Drummer Gaz Hughes unveils his new opus "Nuclear Bebopalypse - A Swing and Bop Odyssey", in his debut for SJN at the Hive. His trio with Gavin Barras (double bass) & Andrzej Baranek (piano) is augmented by Tim Williams (guitar). Showcasing original compositions, the album pays homage to jazz legends, blending heritage with a modern twist to create a captivating soundscape that strikes the perfect balance between tradition and innovation.



Martyn Joseph

26 Jan



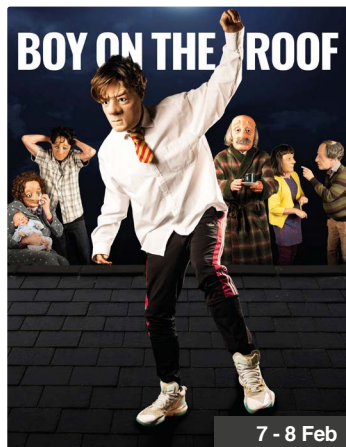
★★★★★ 'A must-see for fans of the book!' What's Good to Do

Dear Zoo

LIVE ON STAGE

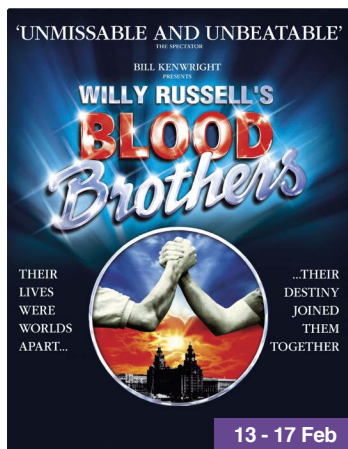
Based on the classic book by Rod Campbell

2 - 4 Feb



BOY ON THE ROOF

7 - 8 Feb



'UNMISSABLE AND UNBEATABLE' THE SPECTATOR

BILL KENWRIGHT PRESENTS

WILLY RUSSELL'S
BLOOD Brothers

THEIR LIVES WERE WORLDS APART...

...THEIR DESTINY JOINED THEM TOGETHER

13 - 17 Feb



SCIENCE MUSEUM

THE **LIVE** STAGE SHOW

EXPLOSIVE FAMILY THEATRE FOR CURIOUS MINDS

20 Feb



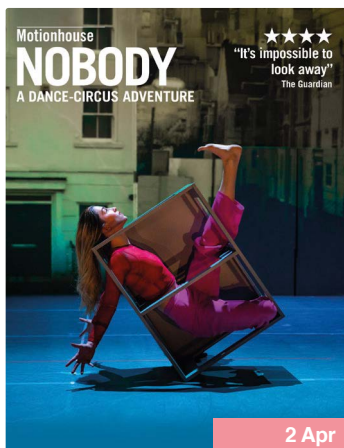
Martha Tilston

15 Mar



JURASSIC LIVE WORLD TOUR

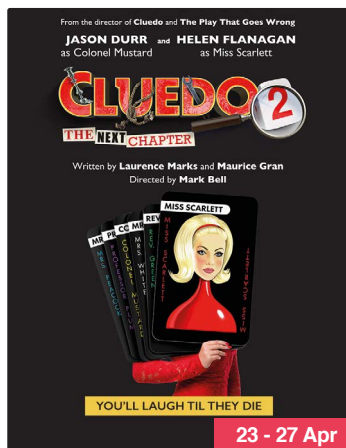
24 - 26 Mar



Motionhouse
NOBODY
A DANCE-CIRCUS ADVENTURE

★★★★★
"It's impossible to look away"
The Guardian

2 Apr



From the director of Cluedo and The Play That Goes Wrong
JASON DURR and **HELEN FLANAGAN**
as Colonel Mustard as Miss Scarlett

CLUEDO 2
THE NEXT CHAPTER

Written by Laurence Marks and Maurice Gran
Directed by Mark Bell



YOU'LL LAUGH TIL THEY DIE

23 - 27 Apr

theatresevern

SHREWSBURY
theatresevern.co.uk



THE HIVE, 5 BELMONT, SHREWSBURY, SY1 1TE

PLEASE NOTE: Our venue and box office are closed on Mondays. Tickets can be booked at any time via The Hive's website: hiveonline.org.uk.

BOOKING INFORMATION

The Hive box office is open Tuesday - Friday, 10am - 4.30pm. Bookings can be made in person, over the phone or online.

A £1 booking fee applies to all transactions to cover essential administration and box office costs. For any enquiries or queries, please do not hesitate to contact us.

The Hive is a registered charity (1108488). Interested in supporting our commitment to provide opportunities for children and young people in Shropshire, Telford & Wrekin? Email: admin@hiveonline.org.uk

We have multiple funders, partners and supporters. To find out more please visit:

hiveonline.org.uk/charity-projects.

VENUE HIRE

Performance Space: A versatile, soundproofed "black box" suitable for meetings, presentations, exhibitions, band rehearsals, gigs, theatre and more. This space includes fresh-air and air conditioning systems. **Current maximum capacity for events is 100 seated.**

Meeting Room: An air conditioned space suitable for up to **10 people**.

Please contact Venue Manager Ellen Green
01743 234970/ellen@hiveonline.org.uk.



SCAN ME!

Sign up to our newsletter to keep up-to-date on everything happening at The Hive.



@HiveShrewsbury

Head to our website to check out our blog,
#LifeInTheHive hiveonline.org.uk.